

Long X [L,L,H,H,H,H]

Model: HX-T401C

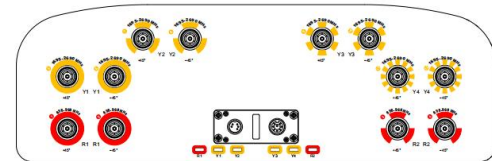
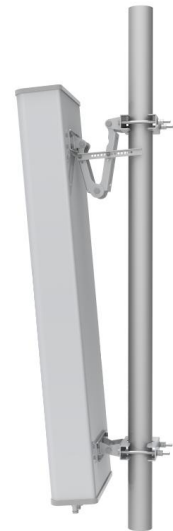


ELECTRICAL SPECIFICATIONS

Frequency Range (MHz)	R1/R2 (698-960)			Y1/Y2/Y3/Y4 (1695-2690)			
	698-824	791-894	880-960	1695-1990	1920-2180	2300-2400	2490-2690
Polarization	±45°						
Gain at mid tilts (dBi)	14.6	15.1	15.6	16.9	17.1	17.3	17.6
Gain over all tilts (dBi)	14.5±0.6	15±0.6	15.5±0.6	16.8±0.6	17±0.6	17.2±0.6	17.5±0.6
Horizontal 3dB beam width(°)	68±6	65±6	63±6	66±6	65±6	63±6	60±6
Vertical 3dB beam width(°)	10±2	9.5±1.5	9±1	6.5±1	6±1	5.5±1	5.3±1
Front to back ratio(dB)	≥22	≥23	≥25	≥24	≥24	≥25	≥25
Cross polar ratio(0°)(dB)	≥15	≥16	≥17	≥15	≥16	≥17	≥18
Upper side lobe suppression (dB)	≥15	≥16	≥15	≥15	≥16	≥16	≥15
Electrical Downtilt (°)	2-12						
Electrical Downtilt accuracy (°)	±1						
Ports VSWR	≤1.5						
Isolation: intra-system (dB)	≥25						
Isolation: inter-system (dB)	≥25						
Intermodulation IM3 (2×43dBm)	≤-153dBc						
Impedance (Ω)	50						
Max Input Power (W)	1200						

MECHANICAL SPECIFICATIONS

Connector(s)	12×4.3-10 female
Connector position	Bottom
Antenna Dimensions (mm)	2600×500×158
Packing Dimensions (mm)	2865×575×235
Mechanical Downtilt kits (°)	0-12
Radome Color	light gray
Radome Material	Fiberglass
Antenna weight (kg)	≤42
Packing weight (kg)	≤54
Wind loading @ Velocity, frontal	2543 N @ 150km/h
Wind loading @ Velocity, lateral	348 N @ 150km/h
Wind loading @ Velocity, rear	2755 N @ 150km/h
Wind Speed,maximun	200 km/h
Operating temperature (°C)	-40~+60
Mounting Pipe Diameter (mm)	Φ50~Φ115



Guangdong HOSENC Communication Technology Co., Ltd®

Address: No. 100, South Sanshui Avenue, Baini Town, Sanshui District, Foshan City, Guangdong Province

危险 Dangerous:

- 高空作业时，操作人员一定要系好安全带，戴好安全帽。
When working high above the ground, the operator must wear safety belts and helmet.
- 请穿戴好防静电的鞋子，请穿长袖衬衫和橡胶手套的防护服。
Wear shoes with rubber soles and heels. Wear protective clothing including a long-sleeved shirt and rubber gloves.
- 请勿在雷雨、大风天气或者所在区域有闪电或者雷声时安装，请勿使用金属梯子。
Do not install on a wet or windy day or when lightning or thunder is in the area. Do not use metal ladder.
- 请勿安装在电源线附近。电源线、电话线和拉线外露时，任何导线都不能接入输入端口。
Do not install near power lines. Power lines, telephone lines, and guy wires look the same. Assume any wire or line can electrify you.

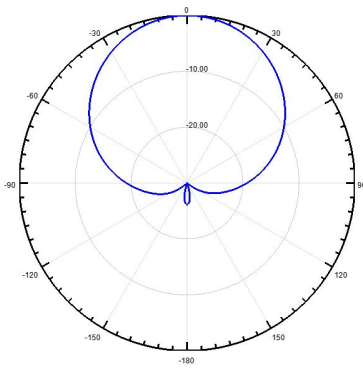
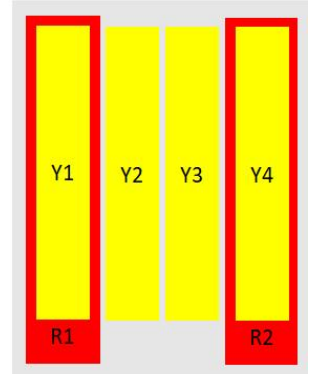
Long X [L,L,H,H,H,H]

Model: HX-T401C

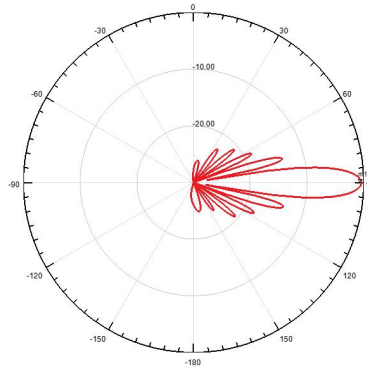


Integrated RET Properties

RET type	Replaceable Integrated RET
RET protocol	AISG 2.0/3GPP
Power supply(V)	10-30 DC
Power consumption(W)	≤0.6(Idle, 12V), ≤6(in Motion, 12V)
Adjustment time (Full Range)	≤4Mins
Adjustment cycles	> 50,000
Temperature range(°C)	-40~65
Lightning protection	3KA(8/20μs) @ Pin5& Pin3; 5KA(8/20μs) @ Pin1/ Pin6& Pin7
Connectors	2 x 8 Pin circle connector according To IEC 60130-9 And AISG. Daisy chain in: Male, Daisy chain out : Female Pin1: 12V; Pin3: RS485B; Pin5: RS485A; Pin6: 10-30V; Pin7: GND; Pin2 & Pin4 & Pin8: N/C



H Pattern



E Pattern

Ant Array	RET Unique ID
R1	HXT401C0N25K00001R1
R2	HXT401C0N25K00001R2
Y1	HXT401C0N25K00001Y1
Y2	HXT401C0N25K00001Y2
Y3	HXT401C0N25K00001Y3
Y4	HXT401C0N25K00001Y4

http://www.hosenc.com/page109?product_id=77



Guangdong HOSENC Communication Technology Co., Ltd®

Address: No. 100, South Sanshui Avenue, Baini Town, Sanshui District, Foshan City, Guangdong Province

危险 Dangerous:

高空作业时，操作人员一定要系好安全带，戴好安全帽。
When working high above the ground, the operator must wear safety belts and helmet.

请穿橡胶底和橡胶鞋的鞋子，请穿长袖衬衫和橡胶手套的防护服。
Wear shoes with rubber soles and heels. Wear protective clothing including a long-sleeved shirt and rubber gloves.

请勿在雨、雪、大风天气或者所在区域有闪电或者雷声时安装，请勿使用金属梯子。
Do not install on a wet or windy day or when lightning or thunder is in the area. Do not use metal ladder.

请勿安装在电源线附近，电源线、电话线和拉线外露情况，任何导线都不能接入设备中。
Do not install near power lines, power lines, telephone lines, and guy wires look the same. Assume any wire or line can electrocute you.